



Centre of Excellence

The world today faces many complex challenges, including the adaptation and mitigation of climate change; rapid urbanization; increased demand for natural resources; growing food, water and energy insecurity; increased natural disasters; and resolution of violent conflict. Most of this challenges have clear tenure dimension. Where to resettle the displaced people, how to faster estimate the damages, where the risks zones are and where are the people who could be most affected.



Tenure governance is essential for dealing with the most pressing issues, for food security, poverty eradication, for contributing to a foundation for responsible investment and for environmental sustainability. It becomes even more important in the era of massive migration, climate change, natural disasters and increasing number of conflicts.

Making best use of available data and technology is a key for the success. Open data, big data management, crowdsourcing, sharing information across borders become critical for surviving. Integrating earth observation geospatial information and statistical data is key for measuring the progress towards achieving the Sustainable Development Goals and minimising the effects of climate change.

FAO together with World Bank and other development partners supports the Serbian Republic Geodetic Authority to improve their services, increase transparency, accountability and public participation. One of the main activities now is focused on the support to the establishment of a Centre of Excellence for Management of Geospatial Information by providing know-how, technical knowledge and work on joint innovative ideas with the Republic Geodetic Authority of Serbia and other ministries. Sharing Serbian experience with other countries and regions will be in our focus in the coming period.

Rumyana Tonchovska, UN FAO

UK Study Visit

The Satellite Applications Catapult hosted a tailored study visit for 14 senior representatives from the Serbian Republic Geodetic Authority (RGA) in the UK as part of the RGA's World Bank financed Real Estate Management Project (27 February 2017 - 2 March 2017). The Serbian delegation gathered best practice and first hand insight into opportunities unlocked by satellite data and services through latest application demonstrations by UK SMEs in areas such as flooding, urban planning, agriculture and machine

learning. Knowledge exchange around sustainable business models underpinned by satellite data was also pivotal for future implementation in Serbia. The visit was delivered in collaboration with HM Land Registry, Ordnance Survey and the Royal Institution of Chartered Surveyors where organisational topics such as change management were discussed. Since the visit, the Catapult has supported the RGA's development of CoE Roadmap and is looking to support the establishment of the RGA's CoE for Management of Geospatial Information.

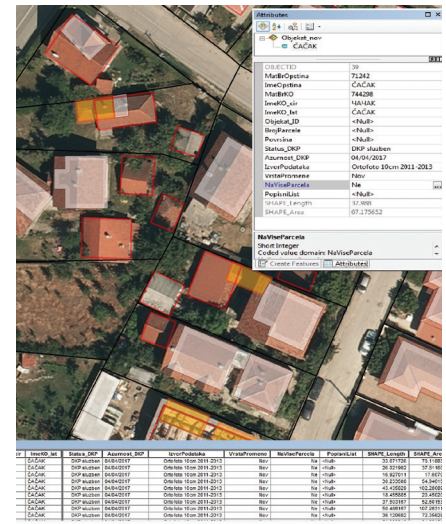
Joana Kamenova, SA Catapult

Implementation of SDI in Serbia

Read more on the back side.

Development of Mass Valuation

Read more on the back side.



Collect Earth Workshop

Read more on the back side.



Implementation of SDI in Serbia

The Republic Geodetic Authority of Republic of Serbia (RGA) is the national contact point for the NSDI implementation and is responsible for establishment, maintenance and management of the NSDI national geoportal, monitoring the INSPIRE Directive implementation, maintaining the registers of stakeholders and monitoring the spatial data infrastructure development at all levels.

Serbia has made significant progress in establishing NSDI leadership and strong governance mechanism. Preparing a legal base in line with the EU INSPIRE Directive and linking NSDI with the Open Data policy and e-government strategy

provides the legal framework for the establishment of NSDI in Serbia. The adoption of the Law is in procedure and it was preceded by a check by the European Commission, whereby it was assessed as comprehensive.

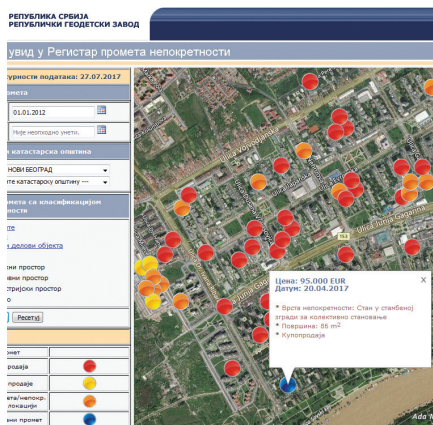
The new NSDI Geoportal is established and new architecture is more user oriented. Several organizations providing access to their datasets via NSDI and initial national Geoportal including municipal level. Various good examples of NSDI use in Serbia already exist, metadata standards in line with INSPIRE Technical Specifications are in use and all core datasets are available via NSDI Geoportal.

Development of Mass Valuation & Building Registry

Republic Geodetic Authority (RGA) of Serbia developed quality assurance system for the Sales Price Register (SPR) during 2017. SPR is a corner stone for mass valuation development which provides valuable data on property market.

buildings using VHR satellite imagery, orthophotos and other available data sources. Also, RGA has developed application for local self-governments for collection of metadata on building decisions which will be linked with

the Building registry. Such register will have multiple use in the field of mas valuation, new taxation system, planning and construction but also for maintenance of official Real-estate and Address register.



RGA is working on implementation of new SPR organizational network and at the same time on implementation of developed quality assurance system. Team of experts engaged by World Bank is supporting RGA in mass valuation prototype development as well as in pilot project for implementation of system for taxation purposes.

In 2017 Netherlands' donor support for RGA has started, including training in mass valuation model development and communication with interested parties in field of real estate market data and mass valuation.

RGA is in process of establishing a Building registry, which will serve for a variety of uses involving spatial data of which property taxation is one. This activity is based on collection of data on

Collect Earth Workshop

With the support of UN FAO between 3rd -7th July 2017 in RGA a workshop on usage of Open Foris open source solution developed by the FAO Forestry Department was organized. Main focus was on the utilisation of Collect

Earth application for land monitoring based primarily on Google Earth and Google Engine platforms. National Agrarian payment agency, Directorate for Agricultural land and Agency for Environmet Protection from the Ministry of Agriculture and Envirment Protection participated and expressed interest to use application for monitoring and detection of changes in land use but also for various statistical and analytical purposes. RGA expressed interest to use the concept of presented open source solutions and to develop applications tailored for validation of existing data bases (Generic Land Cover, Sales Price Register, etc.) based on the existing local data and infrastructure and supported with the available open solutions providing historical and up to date data.

